



**Haycock Road | Cannock | WS12 4FZ**  
Offers In The Region Of £260,000



## Summary

**\*\* MODERN HOME \*\* THREE BEDROOMS \*\* SPACIOUS LOUNGE \*\* REFITTED MODERN KITCHEN DINER \*\* ENCLOSED REAR GARDEN \*\* EN-SUITE TO MASTER BEDROOM \*\* WELL PRESENTED \*\* CLOSE TO CANNOCK CHASE \*\* QUIET CUL-DE-SAC LOCATION \*\* EARLY VIEWING ESSENTIAL \*\***

Webbs Estate Agents are delighted to offer for sale this beautifully presented and spacious home, ideally situated with convenient access to Cannock Chase, Hednesford Town Centre, and a range of local shops and amenities.

The accommodation briefly comprises an entrance hallway with a guest WC, staircase leading to the first floor, and access to a generous lounge. To the rear of the property is a stunning, modern refitted kitchen/diner featuring French doors that open onto the enclosed rear garden.

The first floor offers three well-proportioned bedrooms, a family bathroom, and an en-suite shower room serving the principal bedroom.

Externally, the low-maintenance rear garden benefits from a patio seating area and artificial lawn, providing an ideal space for outdoor relaxation and entertaining. To the front, the property enjoys off-road parking for two vehicles, together with an attractive front garden, completing this excellent home.

EARLY VIEWING ADVISED

## Key Features

- STUNNING REFITTED KITCHEN DINER
- THREE BEDROOMS
- EXCELLENT SCHOOLS AND TRANSPORT LINKS
- GUEST WC
- EARLY VIEWING ADVISED
- ENCLOSED REAR GARDEN
- CLOSE TO CANNOCK CHASE
- SPACIOUS LOUNGE
- POPULAR LOCATION
- BESPOKE WARDROBES TO BEDROOM THREE

## Rooms and Dimensions

### ENTRANCE HALLWAY

### GUEST WC

### SPACIOUS LOUNGE

16'0" x 12'3" (4.89 x 3.75)

### REFITTED MODERN KITCHEN DINER

14'10" x 10'3" (4.54 x 3.14)

### LANDING

### BEDROOM ONE

11'7" x 8'5" (3.54 x 2.59)

### EN-SUITE SHOWER ROOM

8'3" x 4'5" (2.52 x 1.35)

### BEDROOM TWO

10'0" x 8'5" (3.05 x 2.58)

### BEDROOM THREE

8'7" x 6'0" (2.64 x 1.84)

### BATHROOM

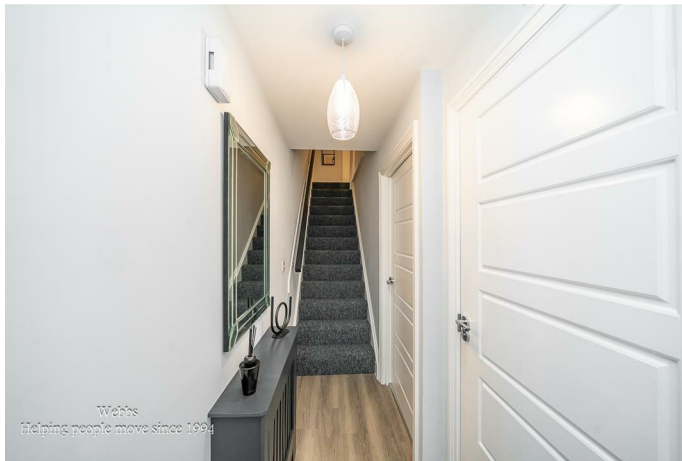
6'2" x 5'5" (1.88 x 1.66)

### ENCLOSED REAR GARDEN

### FRONT GARDEN AND ALLOCATED PARKING SPACES

### IDENTIFICATION CHECKS - C





Webbs  
Helping people move since 1994



Webbs  
Helping people move since 1994



Webbs  
Helping people move since 1994



Webbs  
Helping people move since 1994



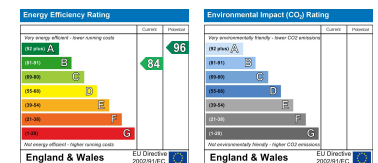
Webbs  
Helping people move since 1994



Webbs  
Helping people move since 1994



Webbs Estate Agents - endeavour to maintain accurate depictions of properties in Virtual Tours, Floor Plans and descriptions, however, these are intended only as a guide and purchasers must satisfy themselves by personal inspection.



153 Avon Road, Cannock, WS11 1LF

Tel: 01543 468846 | Email: sales@webbsestateagents.co.uk | www.webbestateagents.co.uk

